



**BIOFACE5**  
Facial Recognition System

**CONTACTLESS**

Facial Recognition System

---



Contact-less newest 5inch dynamic dual face live scan time attendance access control with Android 8.1 OS, supports Ethernet and optional WIFI connection. Capable of detecting 5 moving persons at 4 meters within 0.7 seconds.

Contact-less  
Facial recognition  
**Solution for**  
Staff attendance &  
door access control

---

# BIOFACE5 Features

On the screen within distance of 4 meters and the accuracy can reach 99.99%, less than 0.7S



Detect and track  
5 Person



1000 facial capacity  
simultaneously  
(Optional 2,000/5,000)



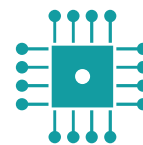
Stranger detection



2.0 Mega Pixels



5 inch IPS screen



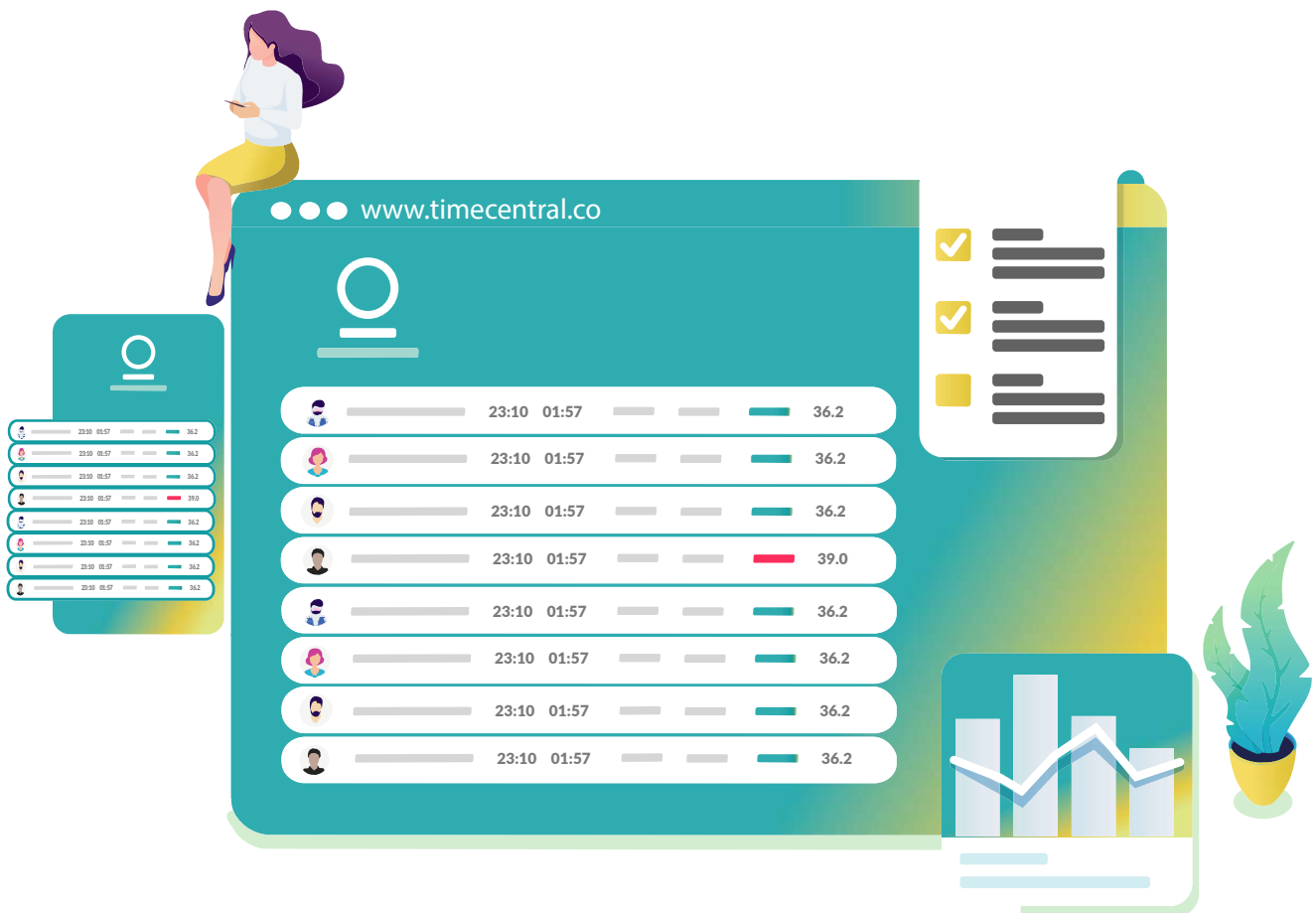
8 GB ROM

# Security



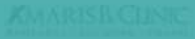
“TimeCentral is the platform you can trust. We take pride in our **ISO 27001** certification because it confirms the breadth and strength of our security practices and our commitment to safeguarding clients’ data”.

# Get daily report via email, or view it on the browser.



## Integrated Solution

Integrated Solution – Works with existing door access system, integrate with turnstile, Visitor management systems, HR System, Time Management System, Student Management System, etc.



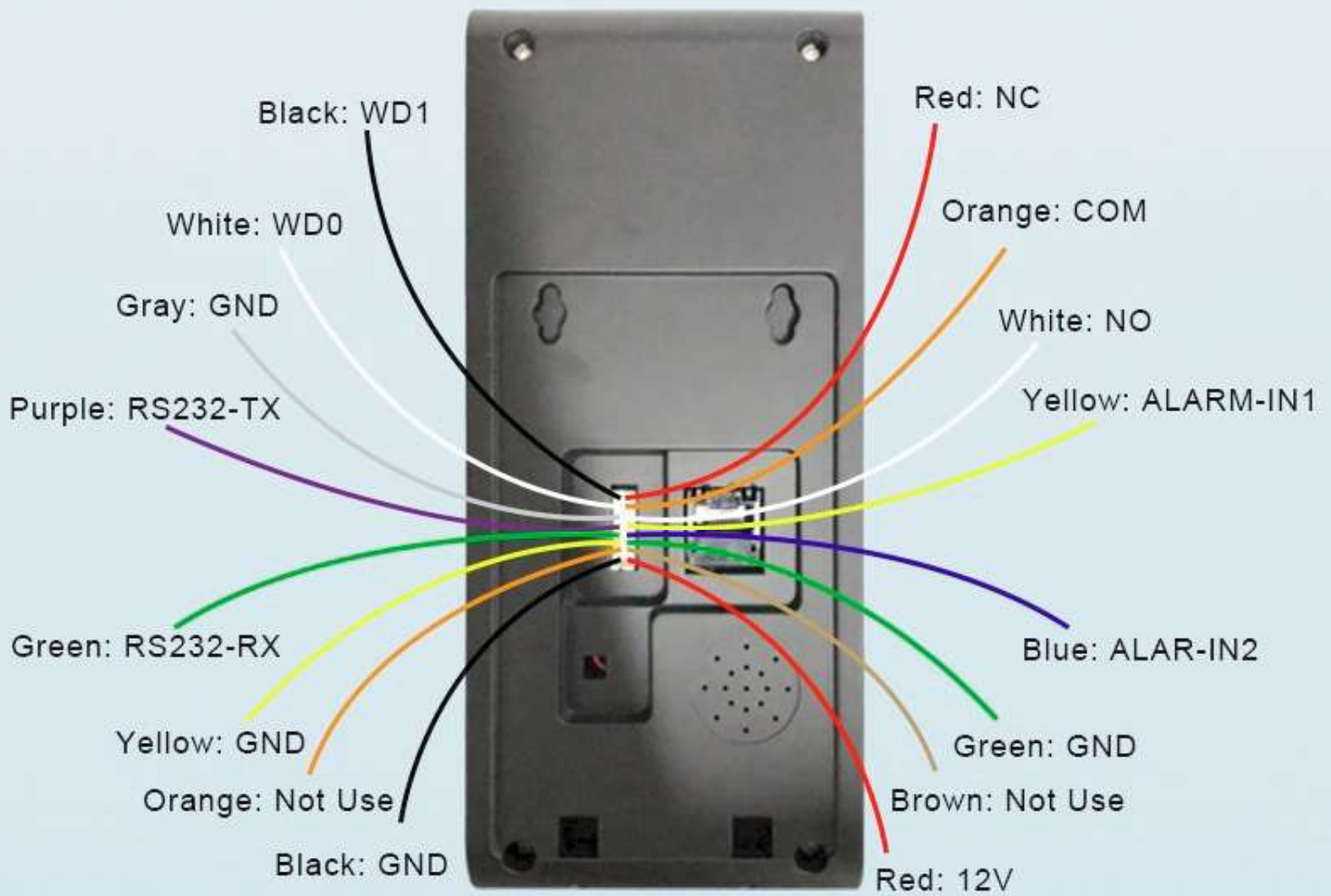
# Client Success Stories

## More than 50k Scans daily

Trusted by Restaurant, Cafe,  
hotels, Construction, clinics,  
Gym & fitness, Schools,  
Tuition, retail, building,  
Science park, Dormitories,  
Engineering, etc.

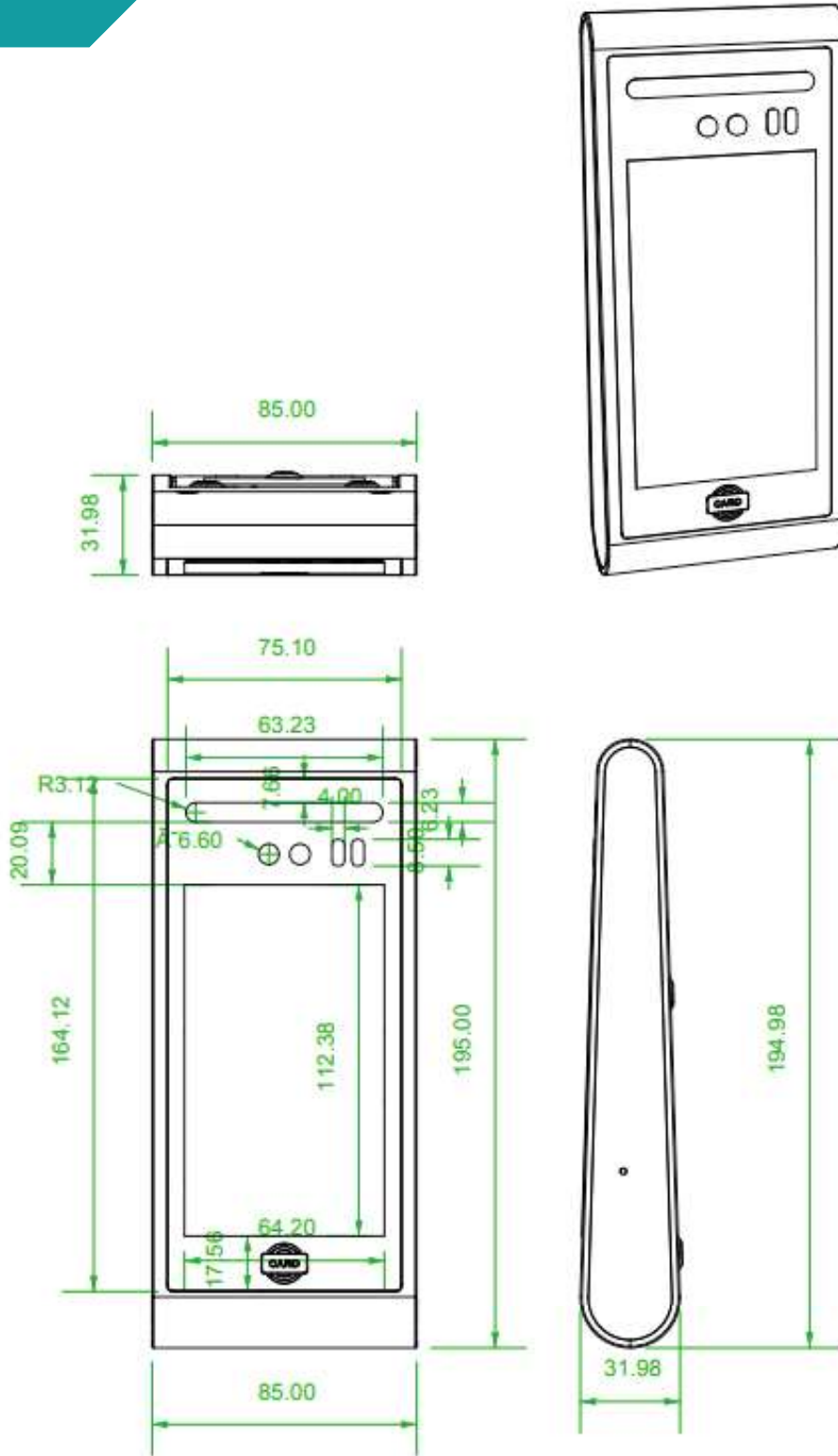


|                    |  |                       |
|--------------------|--|-----------------------|
| Dimension          | 195*85*32mm  |                       |
| OS                 | Android 8.1 with Octa-core 1.5Ghz CPU, GPU support                             |                       |
| Memory             | 2GB RAM and 8GB ROM  |                       |
| Screen             | 5 inch IPS screen with 800*480 resolution                                      |                       |
| Face Capacity      | 1,000 standard; optional 2,000/5,000   |                       |
| Log Capacity       | 1,000,000(auto override), include 10,000 facial record images (auto override); |                       |
| Face Verification  | Single, and Multi face   |                       |
| Detecting Distance | 0-4 meters, adjustable   |                       |
| Cameras            | RGB camera & Infrared camera   |                       |
| RGB camera         | Capture sensor   | Progressive scan CMOS |
|                    | Resolution   | 1600 × 1200           |
|                    | Field angle  | 51°                   |
|                    | Focal length   | 3.5 mm                |
|                    | Aperture   | F2.8                  |
|                    | White balance  | support               |
|                    | Exposure   | support               |
|                    | Resolution   | 2.0 Mega Pixels       |
| Infrared camera    | Capture sensor   | Progressive scan CMOS |
|                    | Resolution   | 1600 × 1200           |
|                    | Field angle  | 51°                   |
|                    | Focal length   | 3.5 mm                |
|                    | Aperture   | F2.8                  |
|                    | White balance  | support               |
|                    | Exposure   | support               |
|                    | Resolution   | 2.0 Mega Pixels       |
| Interface support  | RS-232 & COM & NO & NC; TCP/IP   |                       |
|                    | Wiegand 26/34 output   |                       |
|                    | 2 Alarm inputs   |                       |
| Verification time  | <0.7s  |                       |
| Communication      | TCP/IP; WIFI(Optional)   |                       |
| Card               | Support IC Card(13.56Mhz)  |                       |
| Protection         | IP 42  |                       |





# Dimension **BIOFACE5**



**Installation Options:** Wall mounted

# Dedicated Support



Our team has extensive knowledge of the BIOTEMP hardware and TimeCentral cloud platform. If you need any technical support and the solutions provided in the user manual is insufficient, you can call our agent. [+65 62237996](tel:+6562237996) or email to our device support help desk at [support@timecentral.co](mailto:support@timecentral.co) to get the answers Monday to Friday 9 am to 6 pm. If there is an immediate need for replacement for urgent applications, our agents will get you a free replacement during the 1st year and a rental replacement set thereafter



[www.timecentral.co](http://www.timecentral.co) +65 68372336  
[keepsafe@timecentral.co](mailto:keepsafe@timecentral.co)

Copyright People Central Pte Ltd. All Rights Reserved.

A&BGROUP and its respective logos are copyright of People Central Pte Ltd in Singapore.

All other trademarks and logos belong to their respective owners.