

BIOTEMP
Biometric + Temperature

CONTACTLESS

TraceTogether Scanning +
Temperature Screening +
Face Recognition Attendance



Single Integrated contact-less solution for
scanning TraceTogether App or Token,
Screening Temperature, Face Recognition
with built-in Biometric Attendance.

TraceTogether, **Solution for** Safer Together

By the end of the year, check-ins via
TraceTogether will be compulsory at
Public venues

Simple Setup, Ready to Deploy Solution

Get started on the same day



BIOTEMP Features

Built-in QRCODE Reader

Built in QRCODE reader enables scanning of TraceTogether App or token, as well as other bar-code data.

Real-time Body Temperature

Non-contact temperature screening for Employees, workers, students as well as visitors throughout the day.

Facial Recognition

Authorized employee/visitor photos can be uploaded to BIOTEMP directly, Via mobile app or Cloud application. Using facial recognition technology only authorized user can be allowed.

Mask Recognition

BIOTEMP has the ability to recognize whether the individual is wearing a mask or not. These settings can be adjusted depending on your needs.

Built-in HI-RES Camera Lenses

High-quality HD 2-million pixels built-in cameras to ensure face recognition accuracy as well as advanced infrared thermal imaging for contactless temperature screening accuracy.

Data Storage Local or cloud

BIOTEMP stores 100,000 visitor photos along with their temperature reading and the time & date they were taken. Alternatively, it can store up to 1 million screening data without

3-in-1 LED Light Indicator

GREEN: Normal temperatures,
RED: High temperatures/fever, and
WHITE: Indicates the need of facial light assistance in low-light areas.

Built-in Speaker

The result of screening is read out loud by the speaker, allowing for greater clarity and reducing the need for manual guidance.

Security



“TimeCentral is the platform you can trust. We take pride in our **ISO 27001** certification because it confirms the breadth and strength of our security practices and our commitment to safeguarding clients’ data”.

BIOTEMP Screening Modes

Mode 1

TraceTogether App or Token Scanning

Simple compliance with compulsory check-ins of TraceTogether App or token

Mode 2

TraceTogether App or Token Scanning + Temperature Screening .

Simple compliance with compulsory check-ins of TraceTogether App or token added with Temperature screening – Ideal for retail or any public venue as both the options are required.

Mode 3

TraceTogether App or Token Scanning + Temperature Screening + Facial Recognition

Simple compliance with compulsory check-ins of TraceTogether App or token added with Temperature screening and facial recognition for staff attendance.

Mode 4

Temperature Screening + Facial Recognition

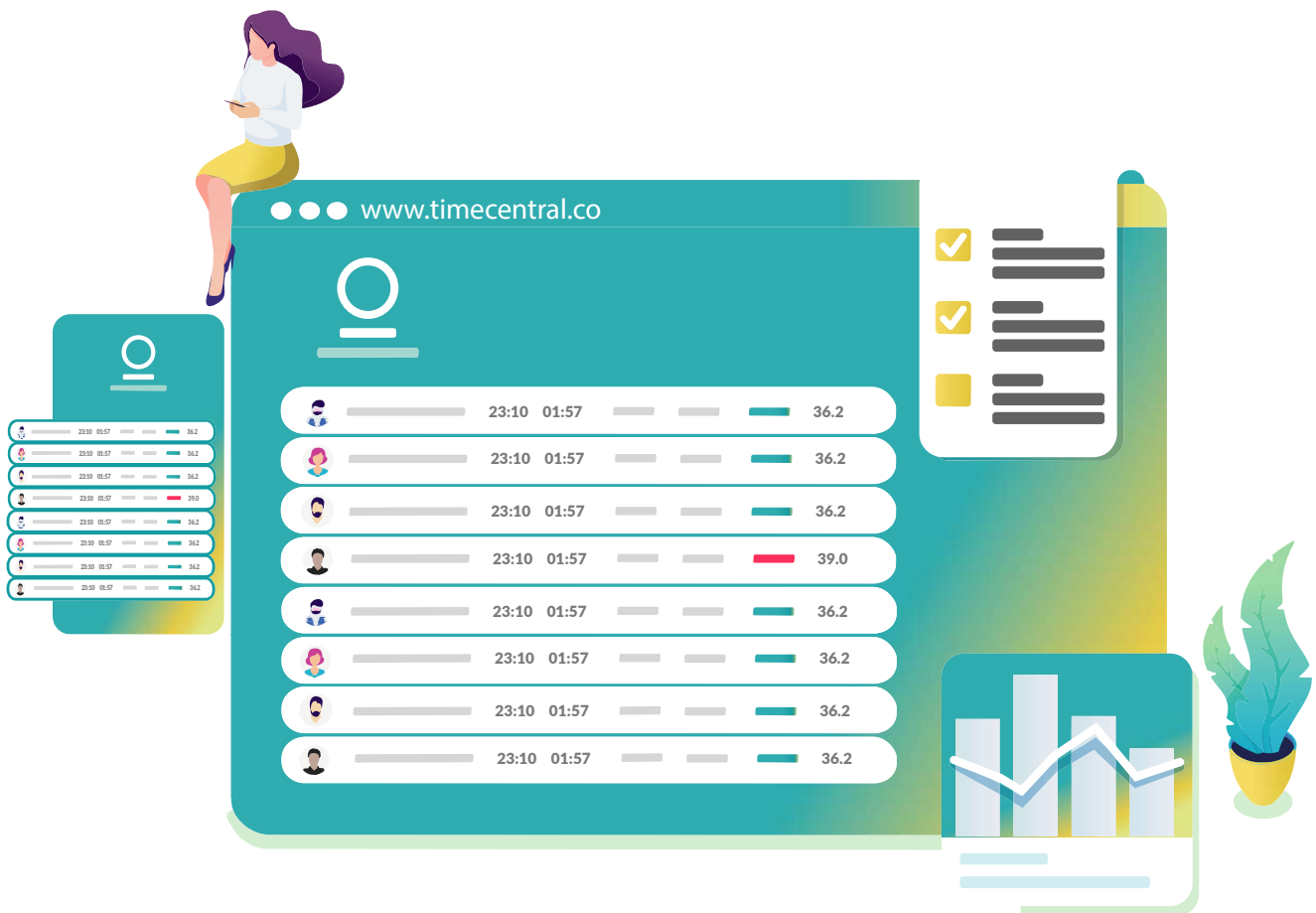
Simple compliance with SafeEntry check-ins via API added with Temperature screening and facial recognition for staff attendance. – Ideal for the offices

Mode 5

Temperature Screening

Simple compliance of Temperature screening at the workplace or public venues

Get daily report via email, or view it on the browser.



Integrated Solution

Integrated Solution – Works with existing door access system, integrate with turnstile, Visitor management systems, HR System, Time Management System, Student Management System, etc.



Client Success Stories

More than 50k Scans daily

Trusted by Restaurant, Cafe,
hotels, Construction, clinics,
Gym & fitness, Schools,
Tuition, retail, building,
Science park, Dormitories,
Engineering, etc.



Screen	Size	8 Inch, IPS LCD Screen
	Brightness	350 LU
	Resolution	800*1280 HD Screen
	Resolution	200W*200W
	Camera Quantity	2
	Type	RGB Camera, Living Body Dynamic Binocular Camera, Thermal Imaging Camera
Camera	Aperture	F2.0
	Focal Length	6mm
	White Balance	Automatic
	Wide Dynamic	Support
Core Parameters	Cpu	4 Cores, 1.8ghz
	Device Interface	2GB Memory, 8GB Storage
	Audio	1 Audio Output (Line Out)
	Video	HDMI2.0 Type-A Interface 1
	Serial Communication Interface	1 RS232 Interface
	Relay Output	1 Relay Interface
	Wigan Output	1 Wiegand Output Interface, Supports Wiegand 26 And 34
Interface	Network Interface	1 RJ45 10M / 100M Adaptive Ethernet Port, WIFI
	Face Detection	Supports Detection And Tracking Of 5 People At The Same Time
	1:N Face Recognition	Under The False Recognition Rate Is 3 In 10,000, The Recognition Accuracy Rate Is 99.7%
Features	Stranger Detection	Support
	Identify Distance Configuration	Support
	Living Body Detection	Support
	Human Temperature	Support
	Temperature Detection Distance	<1m
	Temperature Measurement Accuracy	≤ ±0.5°C
	Temperature Measurement Range	30°C~42.5°C
	Thermal Imaging Field	Support

Human Temperature Detection

Body Temperature Alarm Value Can Be Set

Protection Class

Power Supply

Working Humidity

Power Consumption

Device Size

Protection class

Power supply

Support

IP42, Certain Dust, And Water Resistance

DC12V (±10%)

10% ~ 90 %

10W MAX

240*120*24 (Mm)

IP42, certain dust and water resistance

DC12V (±10%)

General Parameters

Power consumption

Device size

Weight

10W MAX

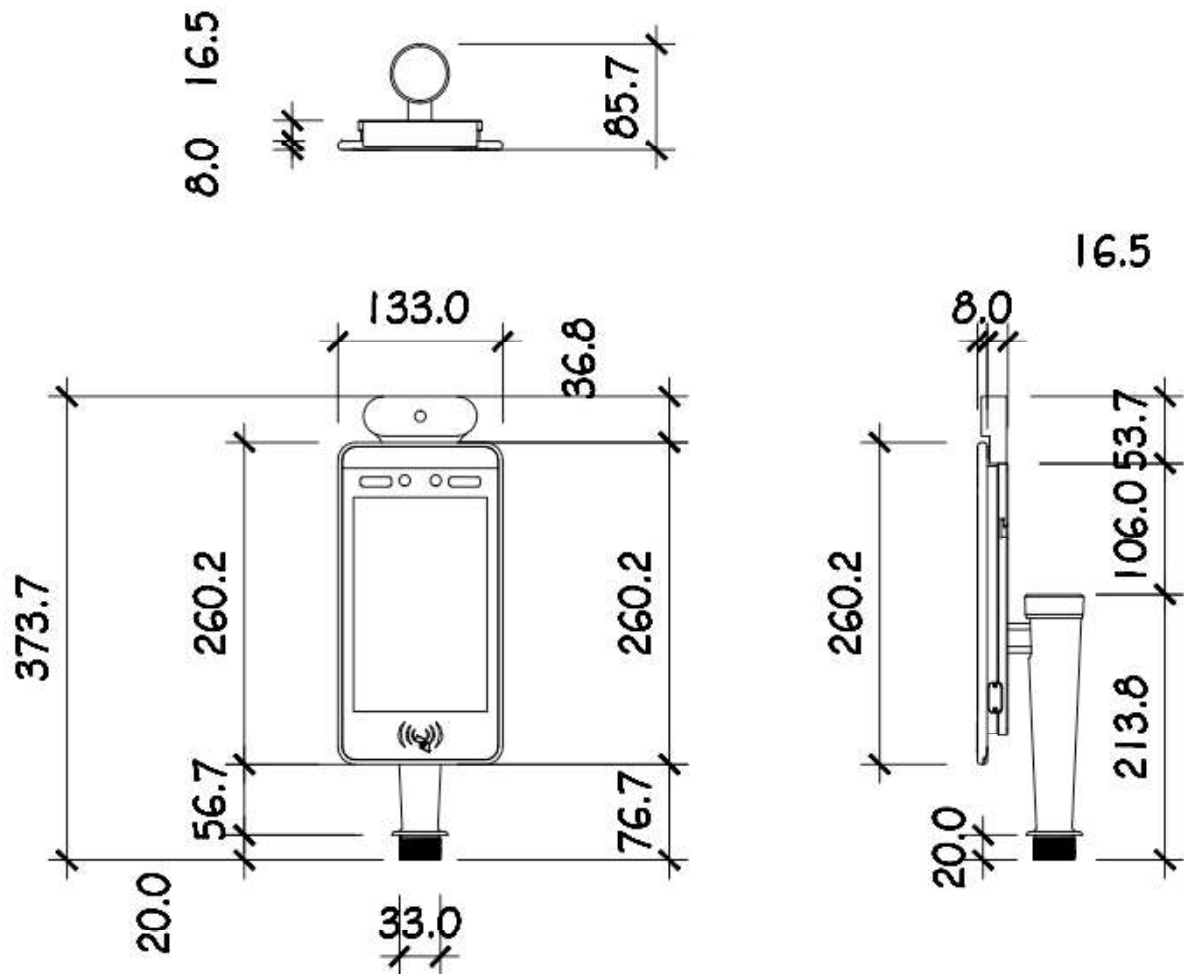
240*120*24 (mm)

≈2kg

Pigtail Wiring Information



Dimension BIOTEMP

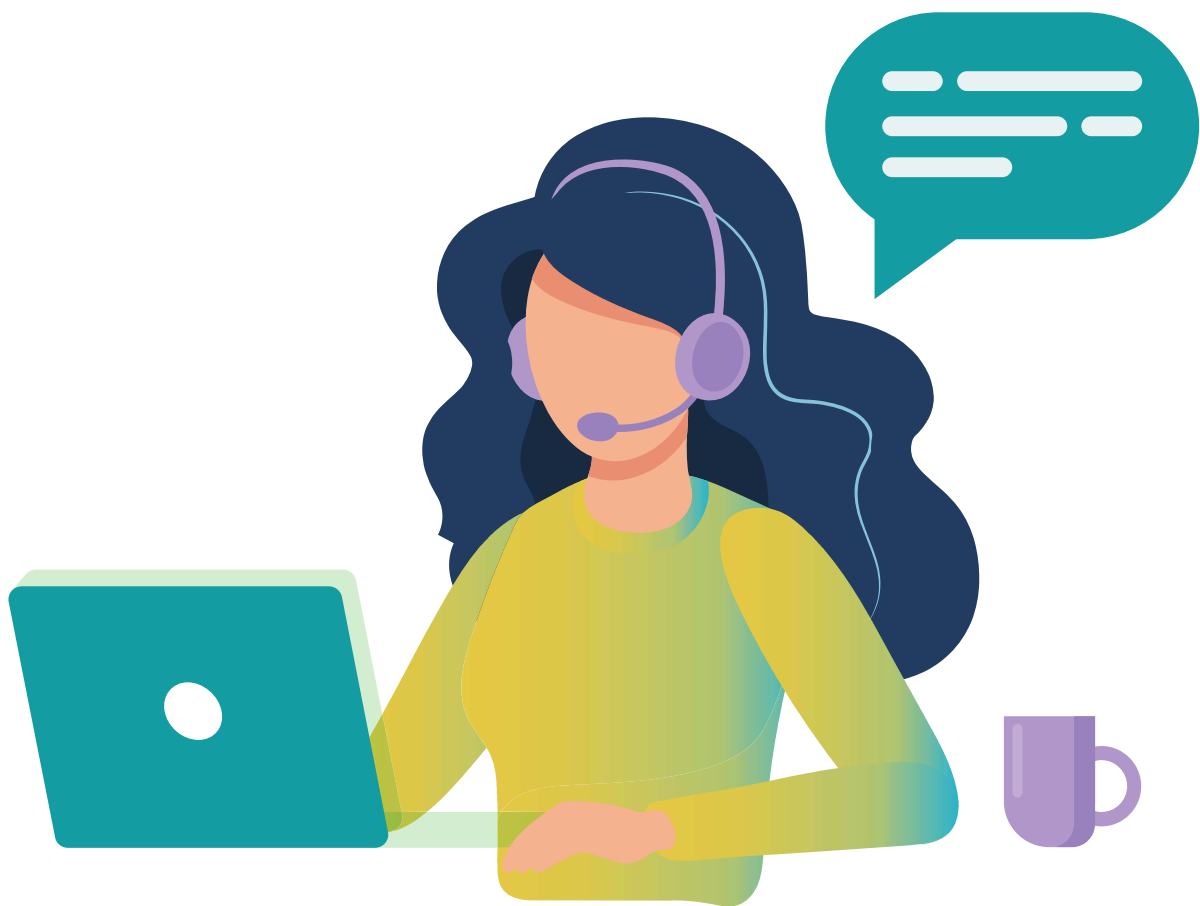


Installation Options:

- 01. Wall mounted
- 02. Desktop Stand

- 03. Floor Stand
- 04. Turnstile

Dedicated **Support**



Our team has extensive knowledge of the BIOTEMP hardware and TimeCentral cloud platform. If you need any technical support for the solutions provided in the user manual is not sufficient, you can call our agent **+65 62237996** or email to our device support help desk at support@timecentral.co to get the answers Monday to Friday 9 am to 6 pm. If there is an immediate need for replacement for urgent applications, our agents will get you a free replacement during the 1st year and a rental replacement set thereafter.



www.timecentral.co +65 68372336
keepsafe@timecentral.co

Part of solution offering from SMEPAYROLL & PEOPLECENTRAL

Copyright Advanced & Best Technologies Pte Ltd. All Rights Reserved.

A&BGROUP and its respective logos are copyright of Advanced and Best Technologies Pte Ltd in Singapore.

All other trademarks and logos belong to their respective owners.